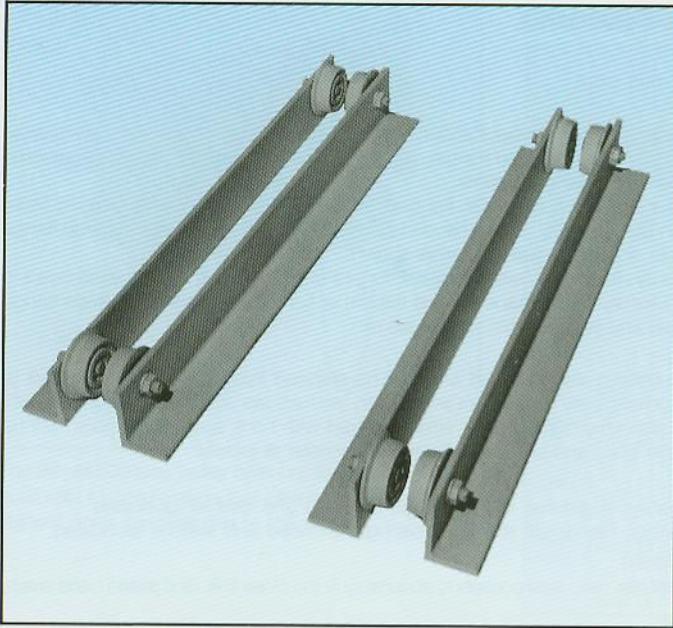


Push-Pull End Trucks

For Underhung Single Girder Cranes

WRIGHT®



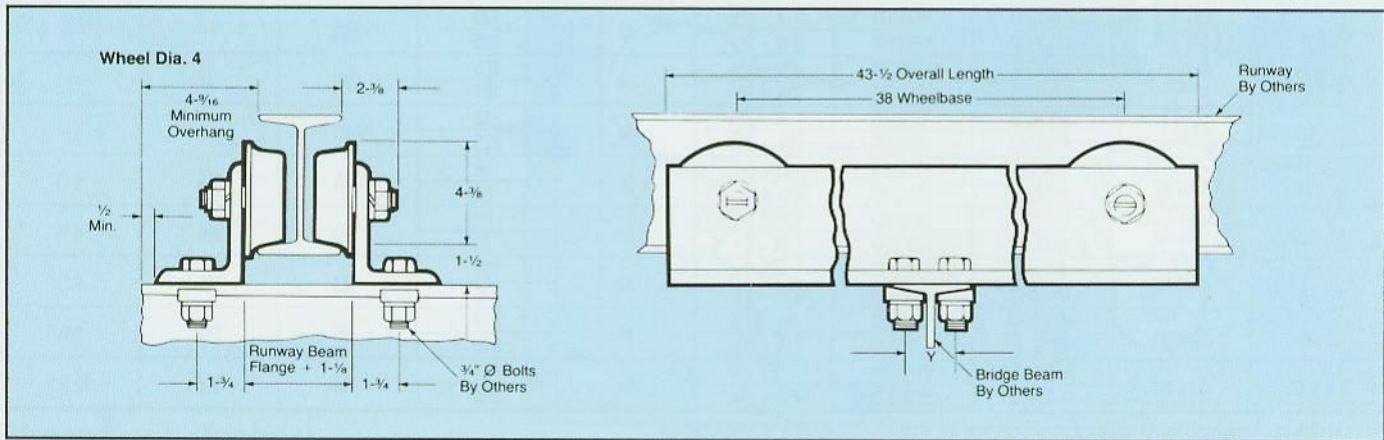
Warning

Only competent fabrication personnel familiar with standard fabrication practices should be employed to assemble these cranes because of the necessity of properly interpreting these instructions and for the purposes of determining appropriate compatible equipment and product applications. Acco disclaims any responsibility for the quality of workmanship employed in the fabrication of a crane according to these instructions or the sufficiency of the system in which and to which this system or equipment is to be installed or the sufficiency of the system to sustain any particular load that may be imposed upon it. Contact Acco for additional information if necessary.

Make your own crane. Designed for light or medium loads, Series 421 Push-Pull End Trucks are the basic component for easy to assemble underhung cranes. Furnished with heat treated gray iron wheels for 2 ton maximum crane capacities with wheel base of 38 inches and spans up to 25 feet.

Wheels are 4" diameter, flanged, dual tread permitting operation on standard "I" beams or flat flange beams and adjustable through a wide range of flange widths. Wheel bearings are single row ball, lifetime lubricated and shielded.

Parts list, crane fabrication instructions and drilling templates are packed with each pair of trucks.



Crane Fabricating & Clearance Dimensions

Capacity (tons)	Product Number	Minimum Size Runway Beam	Weight (lbs.)	Maximum Allowable Load on Each Wheel (lbs.)
2	4210010	6	233	1200

Capacity (tons)	Span (ft.)	Recommended Bridge Beams	Y
1	10	6" x 12.5#	2
	15	8" x 18.4#	2 1/4
	20	10" x 25.4#	2 3/4
	25	12" x 31.8#	3
2	10	8" x 18.4#	2 1/4
	15	10" x 25.4#	2 3/4
	20	12" x 31.8#	3
	25	15" x 42.9#	3 1/2

For clearance between runway beam and bridge beam, subtract toe of runway beam from 1 1/2" dimension.

All dimensions in inches unless otherwise noted.